

Gower West Elem School
Gower SD 62
Willowbrook, ILLINOIS
GRADES : PK K 1 2 3 4



ILLINOIS
SCHOOL
REPORT
CARD

State and federal laws require public school districts to release report cards to the public each year.

This year, we have updated the report card to provide a full picture of school performance beyond just test scores. A display of this data designed with parents and communities in mind is available on illinoisreportcard.com. All of the metrics posted on illinoisreportcard.com are also included in this report.

STUDENTS

RACIAL/ETHNIC BACKGROUND AND OTHER INFORMATION												
	White	Black	Hispanic	Asian	Native Hawaiian /Pacific Islander	American Indian	Two or More Races	Percent Low-Income	Percent Limited-English-Proficient	Percent IEP	Percent Homeless	Total Enrollment
School	62.7	4.0	8.4	14.2	0.0	0.2	10.4	14.7	6.9	13.3	0.2	450
District	63.5	4.3	7.7	14.8	0.0	0.1	9.6	14.5	5.0	11.6	0.2	854
State	49.9	17.5	24.6	4.5	0.1	0.3	3.1	51.5	9.5	13.7	2.4	2,046,857

Low-income students come from families receiving public aid; live in institutions for neglected or delinquent children; are supported in foster homes with public funds; or are eligible to receive free or reduced-price lunches. IEP Students are those students eligible to receive special education services.

Limited-English-proficient students are those students eligible for transitional bilingual programs. **Total Enrollment** is based on Home School. **Homeless** students are who do not have permanent and adequate homes.

	High Sch. Dropout Rate	Chronic Truancy Rate	Mobility Rate	Attendance Rate
School		0.0	5.4	96.1
District		0.0	4.7	95.7
State		8.7	12.3	94.5

Mobility rate is based on the number of times students enroll in or leave a school during the school year. **Chronic truants** are students who are absent from school without valid cause for 9 or more of the last 180 school days.

INSTRUCTIONAL SETTING

PARENTAL CONTACT*		Total School Days	
	Percent		Days
School	100.0	School	174
District	100.0	District	174
State	95.7	State	174

* Parental contact includes parent-teacher conferences, parental visits to school, school visits to home, telephone conversations, and written correspondence.

AVERAGE CLASS SIZE (as of the first school day in May)											
Grades	K	1	2	3	4	5	6	7	8	9 - 12	Overall
School	22.7	18.5	21.0	22.8	22.0						21.3
District	22.7	18.5	21.0	22.8	22.0						17.6
State	21.2	21.6	21.8	22.5	22.8						21.4

TIME DEVOTED TO TEACHING CORE SUBJECTS (Minutes Per Day)												
Grades	Mathematics			Science			English/Language Arts			Social Science		
	3	6	8	3	6	8	3	6	8	3	6	8
School	60			45			120			45		
District	60			45			120			45		
State	62			30			141			30		

TEACHER INFORMATION (Full-Time Equivalents)											
	White	Black	Hispanic	Asian	Native Hawaiian/ Pacific Islander	American Indian	Two or More Races	Unknown	Male	Female	Total Number
State	81.6	6.5	5.5	1.4	0.1	0.2	0.7	4.1	22.9	77.1	130,066

TEACHER INFORMATION (Continued)					
	Average Teaching Experience (Years)	% of Teachers with Bachelor's Degrees	% of Teachers with Master's & Above	% of Teachers with Emergency or Provisional Credentials	% of Classes Not Taught by Highly Qualified Teachers
School	--	--	--	0.0	0.0
District		43.6	54.9	0.0	0.0
State		41.2	58.2	0.6	0.6

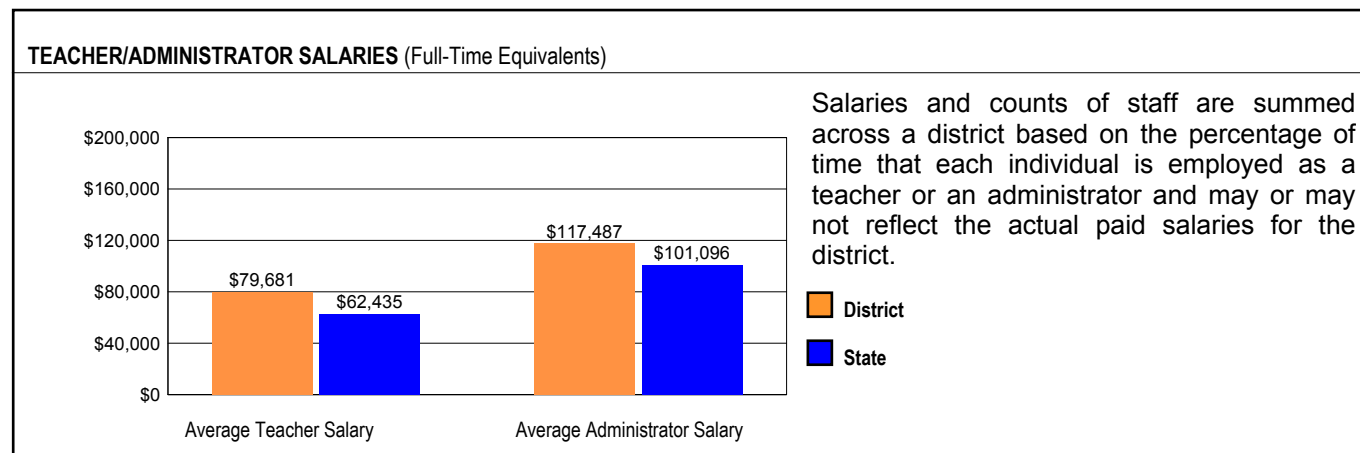
The No Child Left Behind Act requires that information for certain data elements be disaggregated by high- and low-poverty schools. Poverty (low-income) is defined on page 1 of all report cards. High- and low-poverty schools include those in the top and bottom quarters of the poverty distribution of schools in the state.

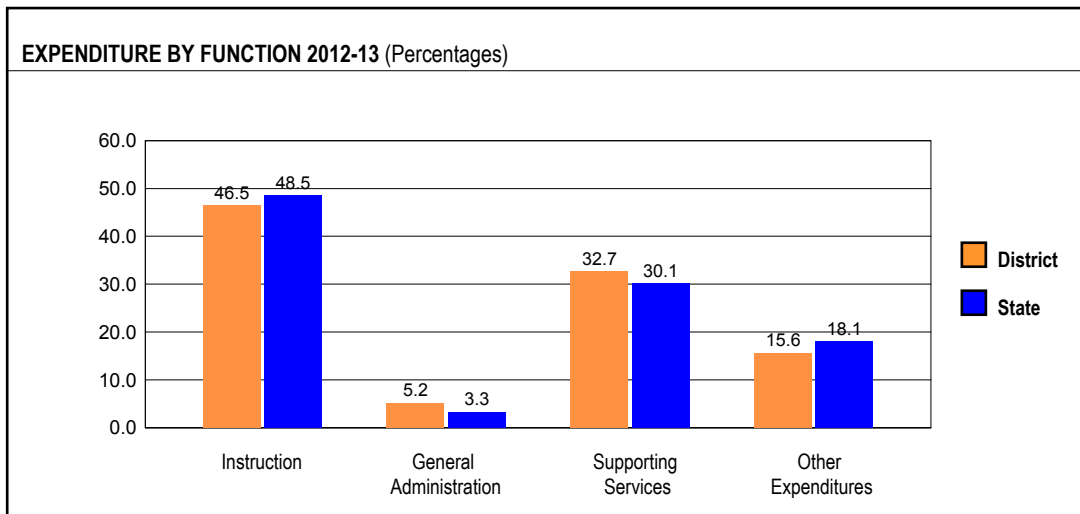
Some teacher/administrator data are not collected at the school level.

TEACHER RETENTION RATE	
School	86.6
District	90.2
State	85.7

PRINCIPAL TURNOVER (Count)	
School	2
District	2
State	2

SCHOOL DISTRICT FINANCES





REVENUE BY SOURCE 2012-13			
	District	District %	State %
Local Property Taxes	\$11,982,024	89.1	61.3
Other Local Funding	\$616,999	4.6	4.7
General State Aid	\$239,299	1.8	16.1
Other State Funding	\$452,009	3.4	10.0
Federal Funding	\$158,673	1.2	7.9
TOTAL	\$13,449,004		

EXPENDITURE BY FUND 2012-13			
	District	District %	State %
Education	\$10,208,275	67.0	73.6
Operations & Maintenance	\$1,155,691	7.6	6.2
Transportation	\$495,785	3.3	3.8
Debt Service	\$1,254,879	8.2	7.8
Tort	\$109,062	0.7	1.2
Municipal Retirement/ Social Security	\$380,369	2.5	2.1
Fire Prevention & Safety	\$0	0.0	0.6
Capital Projects	\$1,626,098	10.7	4.7
TOTAL	\$15,230,159		

OTHER FINANCIAL INDICATORS				
	2011 Equalized Assessed Valuation per Pupil	2011 Total School Tax Rate per \$100	2012-13 Instructional Expenditure per Pupil	2012-13 Operating Expenditure per Pupil
District	\$915,853	1.61	\$8,938	\$14,268
State	**	**	\$7,094	\$12,045

** Due to the way Illinois school districts are configured, state averages for equalized assessed valuation per pupil and total school tax rate per \$100 are not provided.

Equalized assessed valuation includes all computed property values upon which a district's local tax rate is calculated.

Total school tax rate is a district's total tax rate as it appears on local property tax bills.

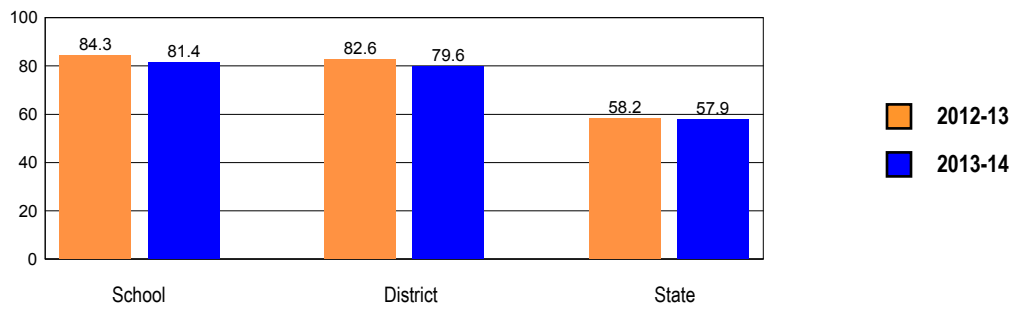
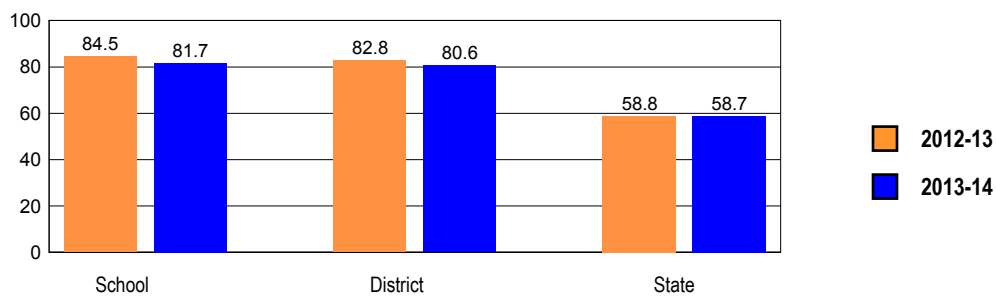
Instructional expenditure per pupil includes the direct costs of teaching pupils or the interaction between teachers and pupils.

Operating expenditure per pupil includes the gross operating cost of a school district excluding summer school, adult education, bond principal retired, and capital expenditures.

ACADEMIC PERFORMANCE

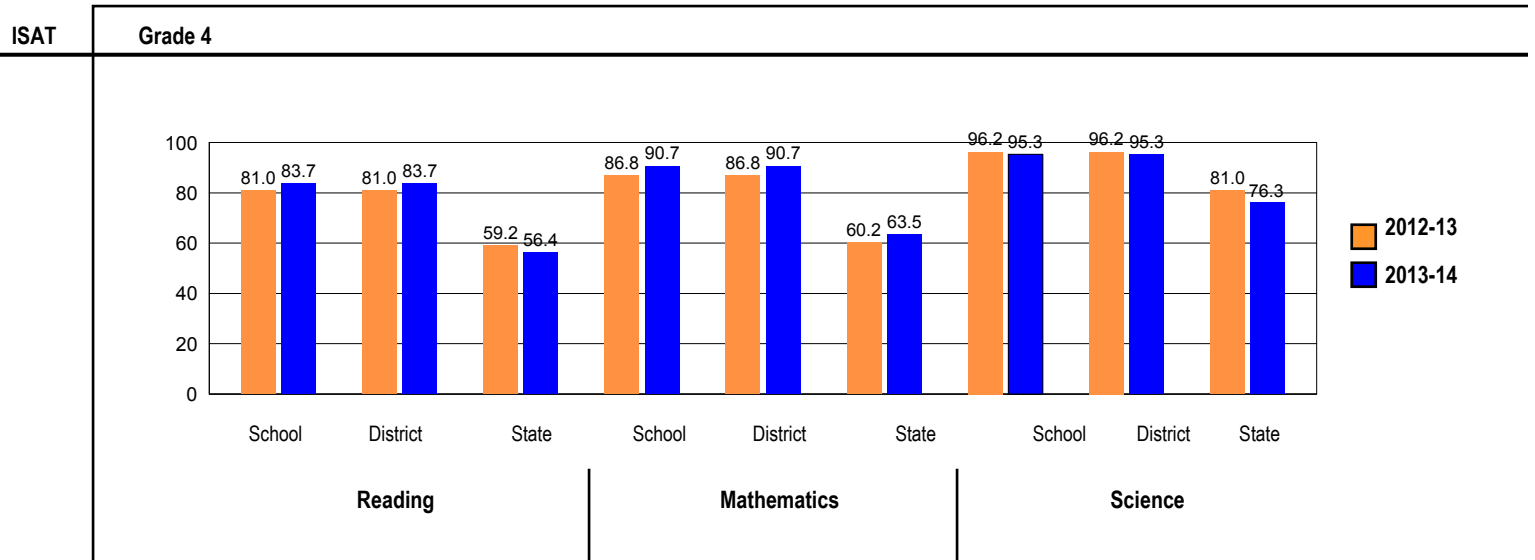
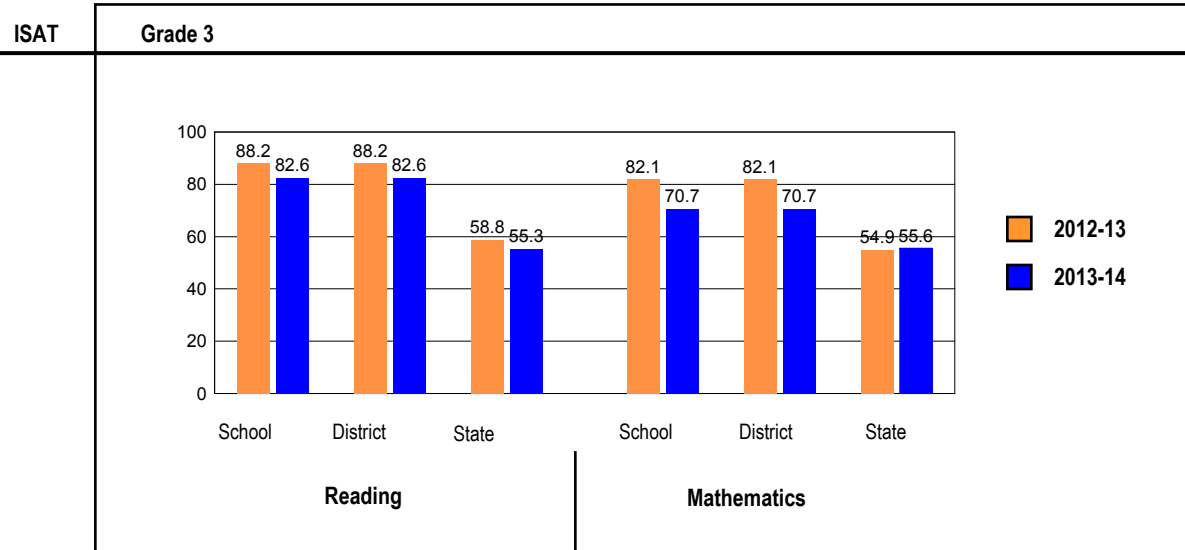
OVERALL STUDENT PERFORMANCE

These charts present the overall percentages of state test scores categorized as meeting or exceeding the Illinois Learning Standards for your school, district, and the state. They represent your school's performance in reading and mathematics. The ISAT reading and math cut scores were reset for school year 2013. Starting in 2013, Illinois raised the performance cut scores in reading and math to align with college and career ready expectations. In order to align the Illinois Alternative Assessment (IAA) with the content standards of the Common Core Essentials Elements, Illinois raised the performance cut scores of IAA in reading and math in 2014.

OVERALL PERFORMANCE - ALL STATE TESTS**OVERALL ILLINOIS STANDARDS ACHIEVEMENT TEST (ISAT) PERFORMANCE**

ISAT PERFORMANCE

These charts provide information on attainment of the Illinois Learning Standards. They show the percents of student scores meeting or exceeding Standards for the grades and subjects tested on ISAT.



PERFORMANCE ON STATE ASSESSMENTS

Federal law requires that student achievement results for reading, mathematics, and science for schools providing Title I services be reported to the general public.

The Illinois Standards Achievement Test (ISAT) is administered to students in grades 3 through 8. The Prairie State Achievement Examination (PSAE) is administered to students in grade 11. The Illinois Alternate Assessment (IAA) is administered to students with disabilities whose Individualized Education Programs (IEPs) indicate that participation in the ISAT or PSAE would not be appropriate.

Students with disabilities have an IEP (No Child Left Behind Act). An IEP is a written plan for a child with a disability who is eligible to receive special education services under the Individuals with Disabilities Education Act.

Reading and Mathematics are tested in grades 3 through 8 and 11. Science is tested in grades 4, 7, and 11.

In order to protect students' identities, test data for groups of fewer than ten students are not reported.

PERCENTAGE OF STUDENTS NOT TESTED IN STATE TESTING PROGRAMS FOR READING															
		Gender			Racial/Ethnic Background							LEP	Migrant	Students with Disabilities	Economically Disadvantaged
		All	Male	Female	White	Black	Hispanic	Asian	Native Hawaiian/Pacific islander	American Indian	Two or More Races				
School	*Enrollment	180	94	86	118	4	14	26	0	0	18	4	0	18	26
	Reading	0.0	0.0	0.0	0.0		0.0	0.0			0.0			0.0	0.0
District	*Enrollment	586	298	288	374	24	45	89	0	0	54	16	0	59	86
	Reading	0.0	0.0	0.0	0.0	0.0	0.0	0.0			0.0	0.0		0.0	0.0
State	*Enrollment	1,060,658	543,109	517,316	532,220	183,481	260,114	48,330	1,029	2,982	31,812	70,904	280	143,042	547,763
	Reading	0.6	0.6	0.5	0.4	0.8	0.6	0.5	1.2	0.8	0.6	1.1	2.5	1.2	0.7

* Enrollment as reported during the testing windows for grades 3 - 8 and 11.

Number of LEP Students who have attended schools in the U.S. for less than 12 months and are not assessed on the State's reading/language arts test: 0

PERCENTAGE OF STUDENTS NOT TESTED IN STATE TESTING PROGRAMS FOR MATHEMATICS															
		Gender			Racial/Ethnic Background							LEP	Migrant	Students with Disabilities	Economically Disadvantaged
		All	Male	Female	White	Black	Hispanic	Asian	Native Hawaiian/Pacific islander	American Indian	Two or More Races				
School	*Enrollment	180	94	86	118	4	14	26	0	0	18	4	0	18	26
	Mathematics	0.0	0.0	0.0	0.0		0.0	0.0			0.0			0.0	0.0
District	*Enrollment	586	298	288	374	24	45	89	0	0	54	16	0	59	86
	Mathematics	0.0	0.0	0.0	0.0	0.0	0.0	0.0			0.0	0.0		0.0	0.0
State	*Enrollment	1,062,316	543,976	518,107	532,697	183,560	260,674	48,844	1,035	2,994	31,822	72,621	281	143,066	548,764
	Mathematics	0.5	0.6	0.5	0.4	0.9	0.5	0.3	0.4	0.6	0.6	0.6	1.4	1.2	0.6

* Enrollment as reported during the testing windows for grades 3 - 8 and 11.

PERCENTAGE OF STUDENTS NOT TESTED IN STATE TESTING PROGRAMS FOR SCIENCE															
		Gender			Racial/Ethnic Background							LEP	Migrant	Students with Disabilities	Economically Disadvantaged
		All	Male	Female	White	Black	Hispanic	Asian	Native Hawaiian/Pacific Islander	American Indian	Two or More Races				
School	*Enrollment	88	46	42	63	0	4	14	0	0	7	0	0	9	13
	Science	0.0	0.0	0.0	0.0			0.0							0.0
District	*Enrollment	175	86	89	124	6	9	23	0	0	13	1	0	18	22
	Science	0.0	0.0	0.0	0.0			0.0			0.0			0.0	0.0
State	*Enrollment	454,072	231,511	222,497	231,754	77,973	108,437	20,846	425	1,245	13,169	23,463	112	60,394	226,620
	Science	0.7	0.8	0.6	0.5	1.3	0.7	0.3	0.2	1.1	0.8	0.9	0.9	1.4	0.9

* Enrollment as reported during the testing windows for grades 4, 7, and 11.

ILLINOIS STANDARDS ACHIEVEMENT TEST (ISAT)

The following tables show the percentages of student scores in each of four performance levels. These levels were established with the help of Illinois educators who teach the grade levels and learning areas tested. Due to rounding, the sum of the percentages in the four performance levels may not always equal 100.

- Level 1 -- Academic Warning - Student work demonstrates limited knowledge and skills in the subject. Because of major gaps in learning, students apply knowledge and skills ineffectively.
- Level 2 -- Below Standards - Student work demonstrates basic knowledge and skills in the subject. However, because of gaps in learning, students apply knowledge and skills in limited ways.
- Level 3 -- Meets Standards - Student work demonstrates proficient knowledge and skills in the subject. Students effectively apply knowledge and skills to solve problems.
- Level 4 -- Exceeds Standards - Student work demonstrates advanced knowledge and skills in the subject. Students creatively apply knowledge and skills to solve problems and evaluate the results.

Grade 3

Grade 3 - All

Levels	Reading				Mathematics			
	1	2	3	4	1	2	3	4
School	4.3	13.0	39.1	43.5	4.3	25.0	38.0	32.6
District	4.3	13.0	39.1	43.5	4.3	25.0	38.0	32.6
State	7.4	37.2	35.9	19.4	7.3	37.1	42.4	13.2

Grade 3 - Gender

Levels	Reading				Mathematics				
	1	2	3	4	1	2	3	4	
Male	School	6.3	16.7	35.4	41.7	6.3	18.8	33.3	41.7
	District	6.3	16.7	35.4	41.7	6.3	18.8	33.3	41.7
	State	8.6	38.9	35.2	17.2	8.1	36.9	41.2	13.8
Female	School	2.3	9.1	43.2	45.5	2.3	31.8	43.2	22.7
	District	2.3	9.1	43.2	45.5	2.3	31.8	43.2	22.7
	State	6.2	35.5	36.6	21.8	6.5	37.2	43.6	12.6

Grade 3 - Racial/Ethnic Background

Levels	Reading				Mathematics				
	1	2	3	4	1	2	3	4	
White	School	5.5	14.5	40.0	40.0	5.5	27.3	41.8	25.5
	District	5.5	14.5	40.0	40.0	5.5	27.3	41.8	25.5
	State	3.4	28.0	41.6	26.9	3.8	29.7	49.4	17.1
Black	School								
	District								
	State	14.0	50.3	27.6	8.0	15.3	49.7	29.9	5.2
Hispanic	School	0.0	10.0	60.0	30.0	10.0	30.0	50.0	10.0
	District	0.0	10.0	60.0	30.0	10.0	30.0	50.0	10.0
	State	11.5	49.4	30.3	8.7	9.7	46.7	37.6	6.0
Asian	School	0.0	0.0	33.3	66.7	0.0	8.3	25.0	66.7
	District	0.0	0.0	33.3	66.7	0.0	8.3	25.0	66.7
	State	2.3	17.5	38.3	41.9	1.6	14.3	43.6	40.5
Native Hawaiian/Pacific Islander	School								
	District								
	State	2.6	31.1	42.4	23.8	3.2	33.3	46.8	16.7
American Indian	School								
	District								
	State	9.7	42.7	36.3	11.3	8.3	44.2	40.7	6.9
Two or More Races	School	0.0	18.2	27.3	54.5	0.0	18.2	27.3	54.5
	District	0.0	18.2	27.3	54.5	0.0	18.2	27.3	54.5
	State	5.4	34.0	37.0	23.6	6.7	35.7	42.0	15.6

Grade 3 - Economically Disadvantaged

Levels	Reading				Mathematics				
	1	2	3	4	1	2	3	4	
Free/Reduced Price Lunch	School	7.7	23.1	46.2	23.1	15.4	38.5	30.8	15.4
	District	7.7	23.1	46.2	23.1	15.4	38.5	30.8	15.4
	State	11.5	48.9	30.9	8.7	11.3	47.6	35.4	5.8
Not Eligible	School	3.8	11.4	38.0	46.8	2.5	22.8	39.2	35.4
	District	3.8	11.4	38.0	46.8	2.5	22.8	39.2	35.4
	State	2.5	23.0	42.0	32.6	2.5	24.3	50.9	22.3

Grade 4**Grade 4 - All**

Levels	Reading				Mathematics				Science			
	1	2	3	4	1	2	3	4	1	2	3	4
School	1.2	15.1	46.5	37.2	1.2	8.1	58.1	32.6	1.2	3.5	51.8	43.5
District	1.2	15.1	46.5	37.2	1.2	8.1	58.1	32.6	1.2	3.5	51.8	43.5
State	5.1	38.6	39.5	16.8	6.6	29.9	51.8	11.7	3.3	20.4	59.9	16.3

Grade 4 - Gender

Levels	Reading				Mathematics				Science				
	1	2	3	4	1	2	3	4	1	2	3	4	
Male	School	2.2	11.1	48.9	37.8	2.2	6.7	57.8	33.3	2.2	0.0	57.8	40.0
	District	2.2	11.1	48.9	37.8	2.2	6.7	57.8	33.3	2.2	0.0	57.8	40.0
	State	6.4	40.7	38.2	14.8	7.3	29.3	50.0	13.3	3.7	21.0	58.2	17.1
Female	School	0.0	19.5	43.9	36.6	0.0	9.8	58.5	31.7	0.0	7.5	45.0	47.5
	District	0.0	19.5	43.9	36.6	0.0	9.8	58.5	31.7	0.0	7.5	45.0	47.5
	State	3.7	36.4	40.9	19.0	5.8	30.5	53.7	10.0	2.8	19.9	61.7	15.6

Grade 4 - Racial/Ethnic Background

Levels	Reading				Mathematics				Science				
	1	2	3	4	1	2	3	4	1	2	3	4	
White	School	1.6	14.5	50.0	33.9	1.6	9.7	59.7	29.0	1.6	3.3	54.1	41.0
	District	1.6	14.5	50.0	33.9	1.6	9.7	59.7	29.0	1.6	3.3	54.1	41.0
	State	2.5	29.2	45.4	23.0	3.7	22.1	58.4	15.7	1.5	12.1	63.6	22.9
Black	School												
	District												
	State	9.9	54.6	29.3	6.2	13.5	44.6	39.0	2.8	7.4	36.4	51.3	5.0
Hispanic	School												
	District												
	State	7.7	50.2	33.9	8.2	8.4	39.1	47.7	4.8	4.5	28.7	59.4	7.4
Asian	School	0.0	7.1	35.7	57.1	0.0	0.0	50.0	50.0	0.0	0.0	42.9	57.1
	District	0.0	7.1	35.7	57.1	0.0	0.0	50.0	50.0	0.0	0.0	42.9	57.1
	State	1.8	18.4	45.0	34.8	2.0	10.7	51.4	35.9	1.3	8.0	56.3	34.4
Native Hawaiian/Pacific Islander	School												
	District												
	State	1.7	28.6	41.2	28.6	1.6	23.0	55.7	19.7	0.8	13.8	55.3	30.1
American Indian	School												
	District												
	State	6.6	42.5	36.9	14.0	5.8	35.0	51.5	7.6	3.3	22.8	59.2	14.7
Two or More Races	School												
	District												
	State	3.8	34.4	41.7	20.2	6.3	27.7	50.5	15.5	2.7	18.1	59.6	19.7

Grade 4 - Economically Disadvantaged

Levels	Reading				Mathematics				Science				
	1	2	3	4	1	2	3	4	1	2	3	4	
Free/Reduced Price Lunch	School	0.0	23.1	38.5	38.5	0.0	15.4	61.5	23.1	0.0	8.3	58.3	33.3
	District	0.0	23.1	38.5	38.5	0.0	15.4	61.5	23.1	0.0	8.3	58.3	33.3
	State	8.0	51.0	33.6	7.4	10.2	40.5	45.1	4.1	5.2	30.0	57.8	7.0
Not Eligible	School	1.4	13.7	47.9	37.0	1.4	6.8	57.5	34.2	1.4	2.7	50.7	45.2
	District	1.4	13.7	47.9	37.0	1.4	6.8	57.5	34.2	1.4	2.7	50.7	45.2
	State	1.7	24.2	46.4	27.7	2.3	17.7	59.5	20.4	1.1	9.5	62.4	27.0

2014 STUDENT ACADEMIC GROWTH

Average Growth Value		
	Reading	Math
School	94.7	111.9
District	104.2	106.9
State	99.4	102.9

Illinois has chosen to use a value table methodology to determine the school and district growth metric based on student performance on large-scale assessments (the ISAT). The numbers contained in the value table represent the number of students in each cell. The average of all students' academic growth over two year's performance will be used to determine the growth metric..

Reading

	Performance Level in Year 2			
	Academic Warning	Below Standards	Meets Standards	Exceeds Standards

		1A	1B	2A	2B	3A	3B	4A	4B
Performance Level in Year 1	Academic Warning	1A							
		1B							
	Below Standards	2A		1	2				
		2B				5	1		
	Meets Standards	3A			2	1	7	2	1
		3B				3	11	4	2
	Exceeds Standards	4A					1	6	7
		4B					5	1	11

Math

		Performance Level in Year 2								
		Academic Warning		Below Standards		Meets Standards		Exceeds Standards		
		1A	1B	2A	2B	3A	3B	4A	4B	
Performance Level in Year 1	Academic Warning	1A								
		1B	1							
	Below Standards	2A			1	1				
		2B			2	2	7	1		
	Meets Standards	3A				1	15	5	1	
		3B					1	12	3	
	Exceeds Standards	4A						5	7	4
		4B						1	3	10