

**Gower Middle School**  
**Gower SD 62**  
**Burr Ridge, ILLINOIS**



**ILLINOIS**  
**SCHOOL**  
**REPORT**  
**CARD**

**GRADES : 5 6 7 8**

State and federal laws require public school districts to release report cards to the public each year.

This year, we have updated the report card to provide a full picture of school performance beyond just test scores. A display of this data designed with parents and communities in mind is available on [illinoisreportcard.com](http://illinoisreportcard.com). All of the metrics posted on [illinoisreportcard.com](http://illinoisreportcard.com) are also included in this report.

**STUDENTS**

RACIAL/ETHNIC BACKGROUND AND OTHER INFORMATION												
	White	Black	Hispanic	Asian	Native Hawaiian /Pacific Islander	American Indian	Two or More Races	Percent Low-Income	Percent Limited-English-Proficient	Percent IEP	Percent Homeless	Total Enrollment
<b>School</b>	66.4	2.8	7.0	14.7	0.0	0.0	9.0	14.0	1.6	10.6	1.0	387
<b>District</b>	63.4	3.6	8.1	14.7	0.0	0.0	10.2	13.1	4.5	12.3	0.6	830
<b>State</b>	49.3	17.5	25.1	4.6	0.1	0.3	3.1	54.2	10.3	14.1	2.3	2,054,556

**Low-income** students come from families receiving public aid; live in institutions for neglected or delinquent children; are supported in foster homes with public funds; or are eligible to receive free or reduced-price lunches.  
**IEP** Students are those students eligible to receive special education services.

**Limited-English-proficient** students are those students eligible for transitional bilingual programs.  
**Total Enrollment** is based on **Home School**.  
**Homeless** students are who do not have permanent and adequate homes.

	High Sch. Dropout Rate	Chronic Truancy Rate	Mobility Rate	Attendance Rate
<b>School</b>		0.0	4.1	95.4
<b>District</b>		0.0	5.0	95.6
<b>State</b>		8.7	12.0	94.2

**Mobility rate** is based on the number of times students enroll in or leave a school during the school year.  
**Chronic truants** are students who are absent from school without valid cause for 9 or more of the last 180 school days.

**INSTRUCTIONAL SETTING**

PARENTAL CONTACT*	
	Percent
<b>School</b>	100.0
<b>District</b>	100.0
<b>State</b>	95.2

TOTAL SCHOOL DAYS	
	Days
<b>School</b>	176
<b>District</b>	176
<b>State</b>	175

8TH GRADERS PASSING ALGEBRA I **	
<b>School</b>	34.1
<b>District</b>	34.1
<b>State</b>	28.4

\*\* For the 8th graders passing algebra I, if the percentage is 0, it means that an Algebra I course is not offered.

\* Parental contact includes parent-teacher conferences, parental visits to school, school visits to home, telephone conversations, and written correspondence.

STUDENT-TO-STAFF RATIOS			
Pupil-Teacher Elementary	Pupil-Teacher Secondary	Pupil-Certified Staff	Pupil-Administrator
--	--	--	--
14.5		10.9	151.8
18.5		11.3	173.3

AVERAGE CLASS SIZE (as of the first school day in May)											
Grades	K	1	2	3	4	5	6	7	8	9 - 12	Overall
School						15.0	22.7	16.7	16.0		17.6
District						15.0	22.7	16.7	16.0		18.6
State						23.1	22.7	21.8	22.2		21.2

TIME DEVOTED TO TEACHING CORE SUBJECTS (Minutes Per Day)												
Grades	Mathematics			Science			English/Language Arts			Social Science		
	3	6	8	3	6	8	3	6	8	3	6	8
School		42	42		42	42		84	84		42	42
District		42	42		42	42		84	84		42	42
State		58	55		44	46		100	89		43	45

TEACHER INFORMATION (Full-Time Equivalents)												
	White	Black	Hispanic	Asian	Native Hawaiian/ Pacific islander	American Indian	Two or More Races	Unknown	Male	Female	Total Number	
	District	96.1	0.6	0.0	3.2	0.0	0.0	0.0	0.0	15.7	84.3	62
State	82.5	6.4	5.7	1.4	0.1	0.2	0.8	3.0	23.2	76.8	129,668	

TEACHER INFORMATION (Continued)					
	Average Teaching Experience (Years)	% of Teachers with Bachelor's Degrees	% of Teachers with Master's & Above	% of Teachers with Emergency or Provisional Credentials	% of Classes Not Taught by Highly Qualified Teachers
School	--	--	--	0.0	0.0
District		33.0	67.0	0.0	0.0
State		38.4	61.1	0.6	0.8

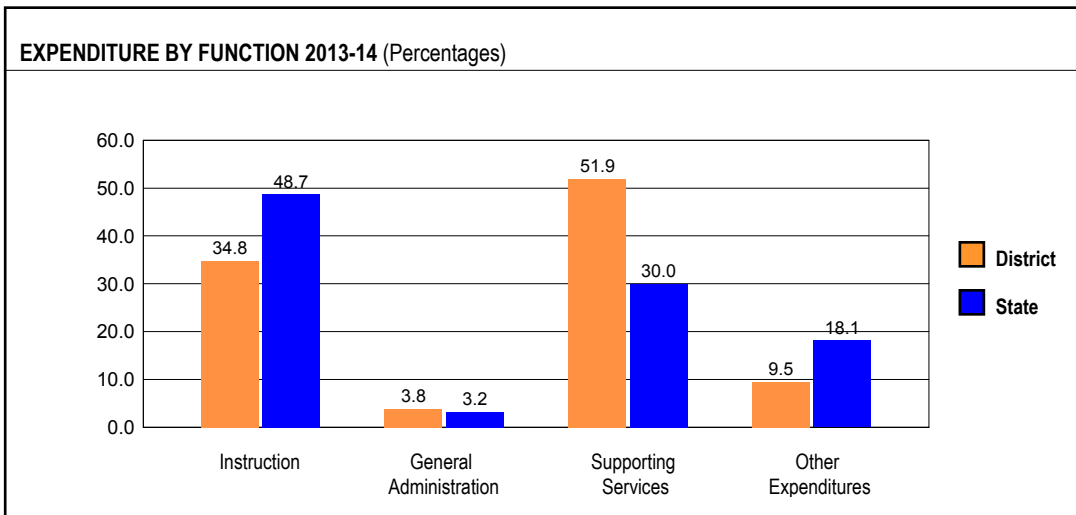
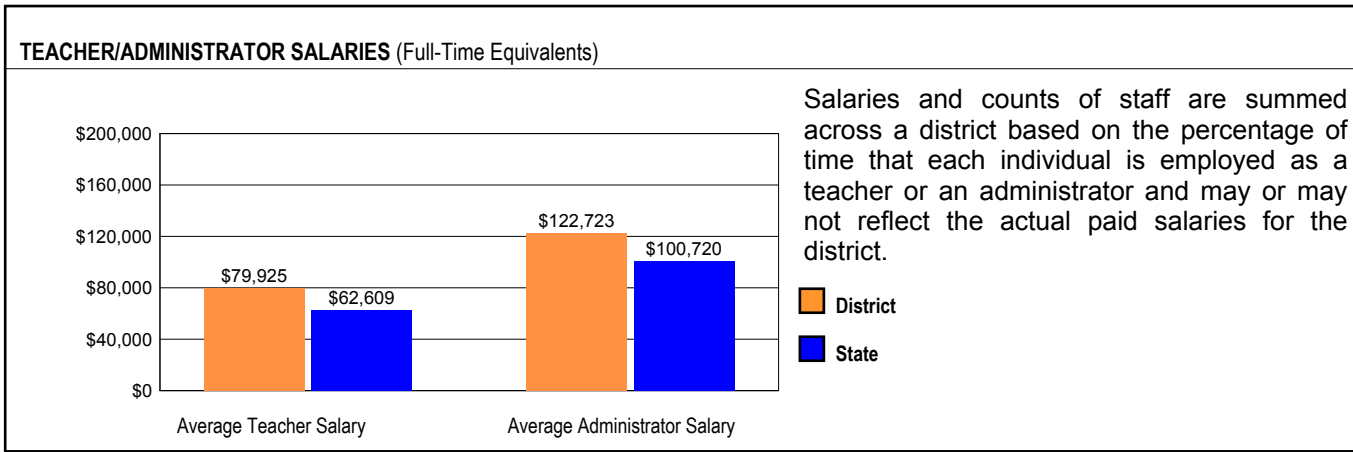
The No Child Left Behind Act requires that information for certain data elements be disaggregated by high- and low-poverty schools. Poverty (low-income) is defined on page 1 of all report cards. High- and low-poverty schools include those in the top and bottom quarters of the poverty distribution of schools in the state.

Some teacher/administrator data are not collected at the school level.

TEACHER RETENTION RATE	
School	91.4
District	89.1
State	85.0

PRINCIPAL TURNOVER (Count)	
School	2.0
District	2.0
State	1.9

## SCHOOL DISTRICT FINANCES



**REVENUE BY SOURCE 2013-14**

	District	District %	State %
Local Property Taxes	\$12,520,857	89.5	61.7
Other Local Funding	\$609,648	4.4	4.4
General State Aid	\$252,550	1.8	16.4
Other State Funding	\$499,915	3.6	9.6
Federal Funding	\$99,976	0.7	7.8
<b>TOTAL</b>	<b>\$13,982,946</b>		

**EXPENDITURE BY FUND 2013-14**

	District	District %	State %
Education	\$10,329,662	49.3	73.4
Operations & Maintenance	\$1,022,599	4.9	6.3
Transportation	\$480,763	2.3	3.7
Debt Service	\$1,150,703	5.5	8.0
Tort	\$138,356	0.7	1.2
Municipal Retirement/ Social Security	\$373,856	1.8	2.1
Fire Prevention & Safety	\$0	0.0	0.5
Capital Projects	\$7,441,249	35.5	4.7
<b>TOTAL</b>	<b>\$20,937,188</b>		

**OTHER FINANCIAL INDICATORS**

	2012 Equalized Assessed Valuation per Pupil	2012 Total School Tax Rate per \$100	2013-14 Instructional Expenditure per Pupil	2013-14 Operating Expenditure per Pupil
District	\$862,496	1.80	\$9,395	\$15,241
State	**	**	\$7,419	\$12,521

\*\* Due to the way Illinois school districts are configured, state averages for equalized assessed valuation per pupil and total school tax rate per \$100 are not provided.

Equalized assessed valuation includes all computed property values upon which a district's local tax rate is calculated.

Total school tax rate is a district's total tax rate as it appears on local property tax bills.

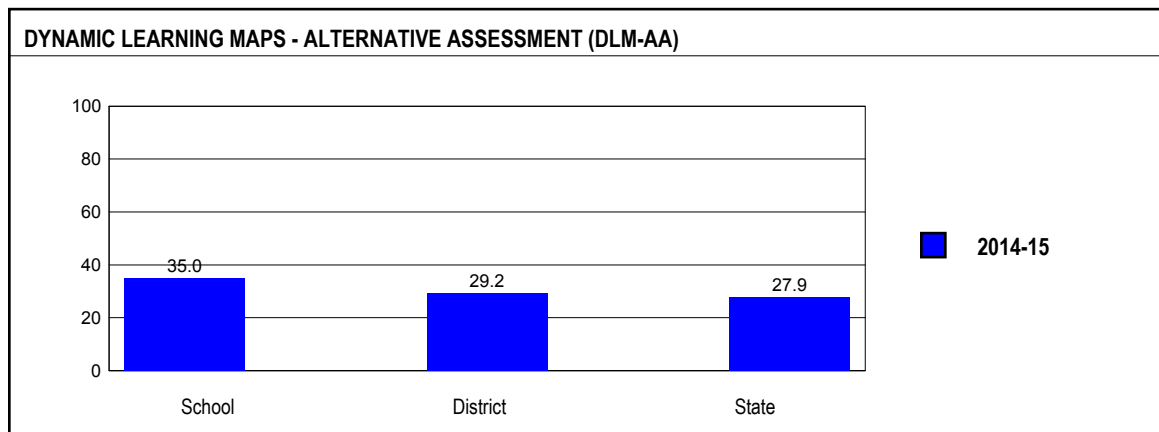
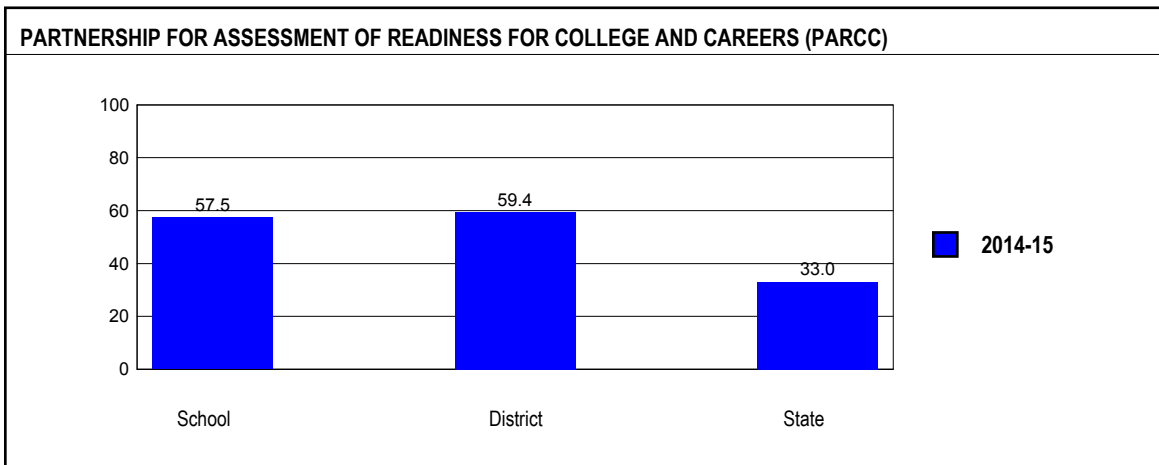
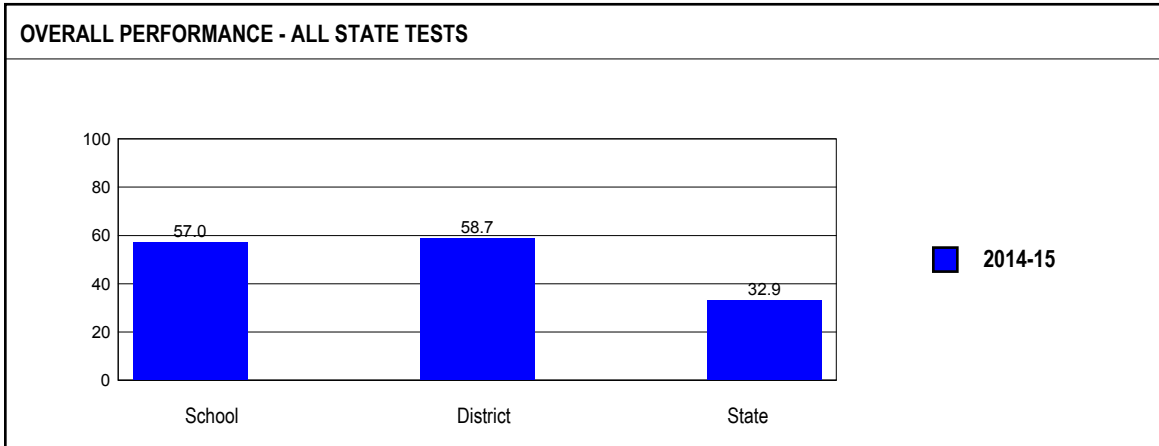
Instructional expenditure per pupil includes the direct costs of teaching pupils or the interaction between teachers and pupils.

Operating expenditure per pupil includes the gross operating cost of a school district excluding summer school, adult education, bond principal retired, and capital expenditures.

## ACADEMIC PERFORMANCE

### OVERALL STUDENT PERFORMANCE

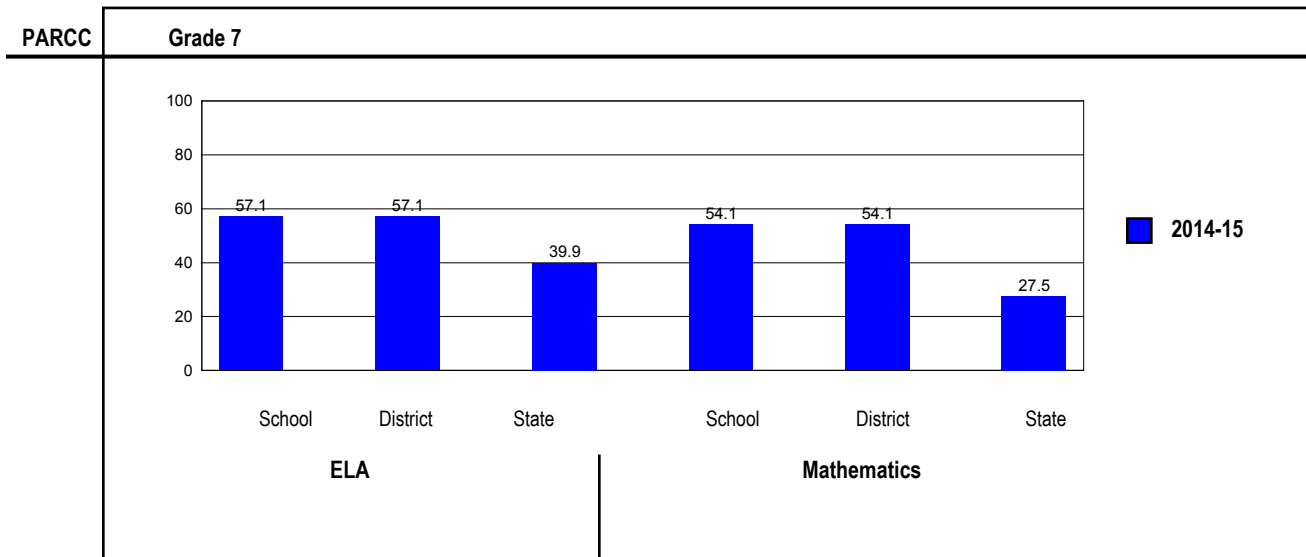
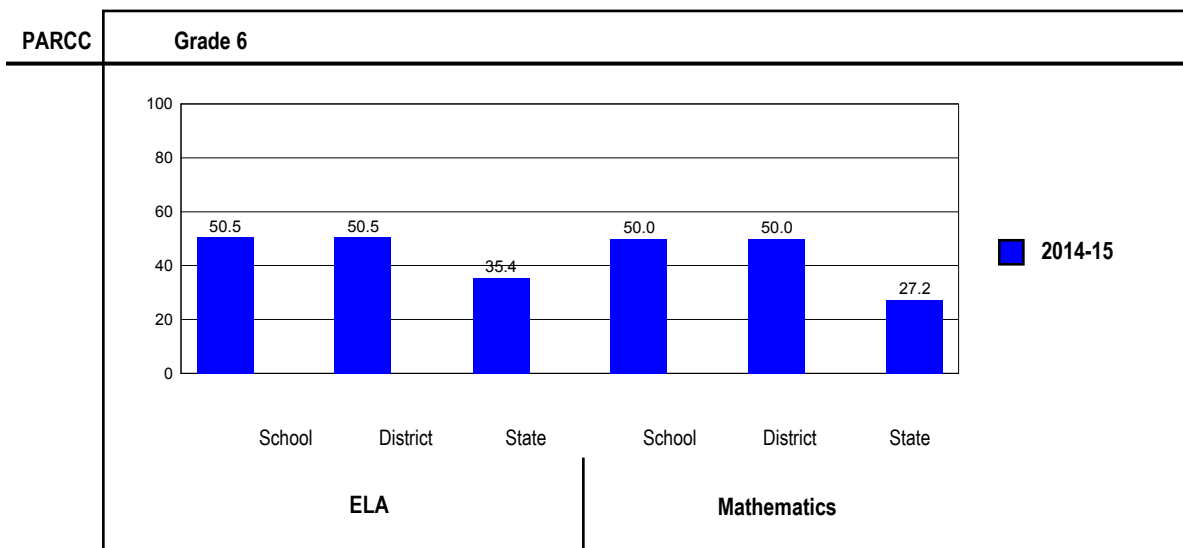
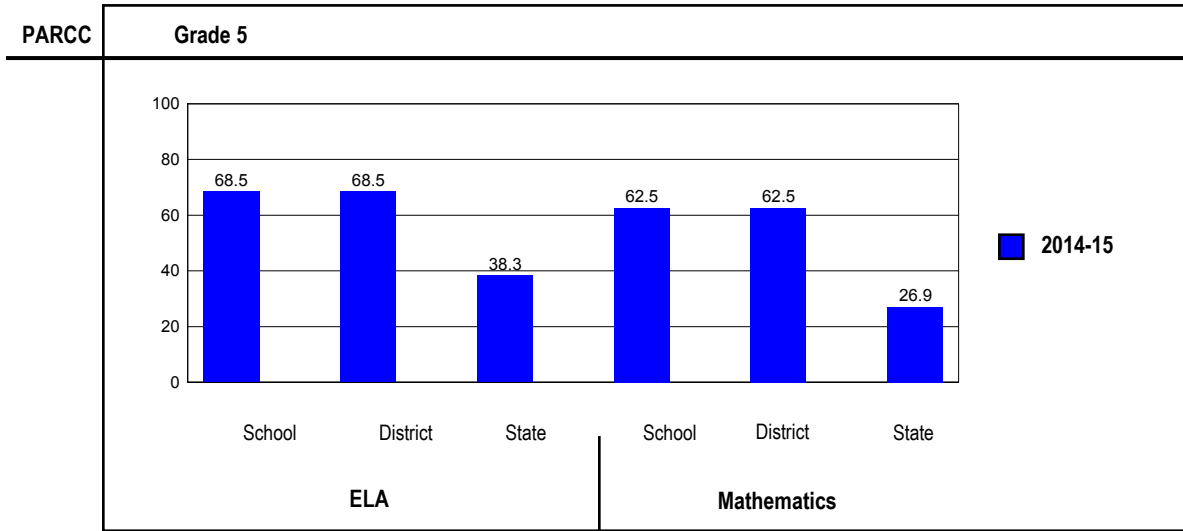
These charts present the overall percentage of state test scores categorized as meeting or exceeding the PARCC expectations or DLM-AA Standards for your district, and the state.



DLM-AA scores in the Progressing and Attaining performance levels count the same, respectively, as scores on PARCC that met or exceeded expectations.

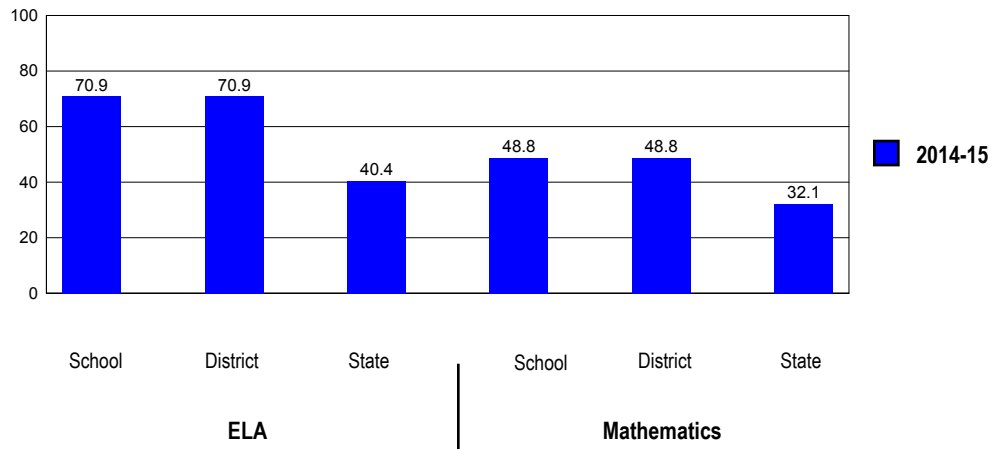
**PARCC PERFORMANCE**

These charts present the overall percentage of state test scores categorized as meeting or exceeding the PARCC expectations or DLM-AA Standards for your district, and the state.



PARCC

Grade 8



## PERFORMANCE ON STATE ASSESSMENTS

The PARCC is administered to students in grade 3 through 8 and high school. The DLM-AA is administered to students in grade 3 through 8 and 11 with disabilities whose Individualized Education Programs (IEPs) indicate that participation in the PARCC would not be appropriate.

Students with disabilities have an IEP (No Child Left Behind Act). An IEP is a written plan for a child with a disability who is eligible to receive special education services under the Individuals with Disabilities Education Act.

In order to protect students' identities, test data for groups of fewer than ten students are not reported.

PERCENTAGE OF STUDENTS NOT TESTED IN STATE TESTING PROGRAMS FOR ELA															
		Gender			Racial/Ethnic Background							LEP	Migrant	Students with Disabilities	Economically Disadvantaged
		All	Male	Female	White	Black	Hispanic	Asian	Native Hawaiian/Pacific Islander	American Indian	Two or More Races				
School	*Enrollment	382	187	195	251	12	28	57	0	0	34	3	0	40	51
	Reading	0.0	0.0	0.0	0.0	0.0	0.0	0.0			0.0			0.0	0.0
District	*Enrollment	561	284	277	351	21	50	87	0	0	52	14	0	60	78
	Reading	0.4	0.4	0.4	0.3	0.0	2.0	0.0			0.0	0.0		3.3	1.3
State	*Enrollment	1,051,644	539,225	512,413	519,457	180,273	267,111	48,402	1,065	3,047	32,282	80,472	208	147,514	562,211
	Reading	4.4	4.4	4.4	3.6	6.4	4.9	3.1	5.4	5.1	4.5	4.0	1.4	6.7	4.8

\* Enrollment as reported during the testing windows for grades 3 - 8 and high school.

Number of LEP Students who have attended schools in the U.S. for less than 12 months and are not assessed on the State's reading/language arts test: 0

PERCENTAGE OF STUDENTS NOT TESTED IN STATE TESTING PROGRAMS FOR MATHEMATICS															
		Gender			Racial/Ethnic Background							LEP	Migrant	Students with Disabilities	Economically Disadvantaged
		All	Male	Female	White	Black	Hispanic	Asian	Native Hawaiian/Pacific Islander	American Indian	Two or More Races				
School	*Enrollment	383	188	195	251	12	28	58	0	0	34	4	0	40	51
	Mathematics	0.8	1.6	0.0	1.2	0.0	0.0	0.0			0.0			7.5	0.0
District	*Enrollment	564	286	278	352	21	51	88	0	0	52	17	0	61	79
	Mathematics	1.1	1.4	0.7	1.1	0.0	3.9	0.0			0.0	5.9		9.8	2.5
State	*Enrollment	1,030,870	528,245	502,619	503,821	178,766	265,694	47,031	1,068	2,998	31,485	84,309	222	144,880	557,528
	Mathematics	4.4	4.4	4.3	3.4	6.5	5.0	2.8	5.8	4.5	4.3	4.6	4.5	6.6	4.7

\* Enrollment as reported during the testing windows for grades 3 - 8 and high school.

## Partnership for Assessment of Readiness for College and Careers (PARCC)

Each Performance Level is a broad, categorical level defined by a student's overall scale score and used to report overall student performance by describing how well students met the expectations for their grade level/course. Each Performance Level is defined by a range of overall scale scores for the assessment. There are five Performance Levels for PARCC assessments:

- Level 1: Did not yet meet expectations
- Level 2: Partially met expectations
- Level 3: Approached expectations
- Level 4: Met expectations
- Level 5: Exceeded expectations

Students performing at levels 4 and 5 met or exceeded expectations, have demonstrated readiness for the next grade level/course and, ultimately, are on track for college and careers. Performance Level Descriptors (PLDs) describe the knowledge, skills, and practices that students should know and be able to demonstrate at each Performance Level in each content area (ELA/L and mathematics), and at each grade level/course. PLDs are available at <http://avocet.pearson.com/PARCC/Home>.

### Grade 5

#### Grade 5 - All

Levels	ELA					Mathematics				
	1	2	3	4	5	1	2	3	4	5
School	0.0	5.6	25.8	61.8	6.7	0.0	10.2	27.3	45.5	17.0
District	0.0	5.6	25.8	61.8	6.7	0.0	10.2	27.3	45.5	17.0
State	10.8	21.4	29.4	35.6	2.7	13.2	30.2	29.7	23.6	3.3

#### Grade 5 - Gender

Levels	ELA					Mathematics					
	1	2	3	4	5	1	2	3	4	5	
Male	School	0.0	8.5	27.7	59.6	4.3	0.0	10.9	26.1	39.1	23.9
	District	0.0	8.5	27.7	59.6	4.3	0.0	10.9	26.1	39.1	23.9
	State	13.4	23.9	29.7	31.4	1.6	14.9	30.6	28.0	22.9	3.7
Female	School	0.0	2.4	23.8	64.3	9.5	0.0	9.5	28.6	52.4	9.5
	District	0.0	2.4	23.8	64.3	9.5	0.0	9.5	28.6	52.4	9.5
	State	8.1	18.9	29.2	40.0	3.9	11.5	29.8	31.4	24.3	3.0



**Grade 5 - Racial/Ethnic Background**

Levels	ELA					Mathematics					
	1	2	3	4	5	1	2	3	4	5	
White	School	0.0	6.3	30.2	58.7	4.8	0.0	12.9	25.8	46.8	14.5
	District	0.0	6.3	30.2	58.7	4.8	0.0	12.9	25.8	46.8	14.5
	State	6.9	16.7	29.4	43.7	3.4	8.3	24.9	32.3	30.4	4.1
Black	School										
	District										
	State	19.4	30.7	29.2	20.0	0.8	25.5	40.7	23.9	9.3	0.5
Hispanic	School										
	District										
	State	14.3	27.2	31.4	25.9	1.2	16.8	37.2	29.7	15.4	0.9
Asian	School	0.0	0.0	6.7	86.7	6.7	0.0	0.0	20.0	53.3	26.7
	District	0.0	0.0	6.7	86.7	6.7	0.0	0.0	20.0	53.3	26.7
	State	3.9	8.6	21.1	56.2	10.2	3.2	11.7	22.9	44.6	17.5
Native Hawaiian/Pacific Islander	School										
	District										
	State	6.1	7.8	28.7	52.2	5.2	4.3	20.5	31.6	37.6	6.0
American Indian	School										
	District										
	State	15.8	20.8	28.3	33.0	2.1	12.4	36.1	31.7	18.6	1.3
Two or More Races	School										
	District										
	State	9.2	20.5	27.8	39.0	3.5	12.1	29.6	28.4	25.1	4.8

**Grade 6**

**Grade 6 - All**

Levels	ELA					Mathematics				
	1	2	3	4	5	1	2	3	4	5
School	4.0	13.1	32.3	36.4	14.1	1.0	12.2	36.7	35.7	14.3
District	4.0	13.1	32.3	36.4	14.1	1.0	12.2	36.7	35.7	14.3
State	11.4	21.6	31.6	31.2	4.2	12.7	29.7	30.5	24.0	3.2

**Grade 6 - Gender**

Levels	ELA					Mathematics					
	1	2	3	4	5	1	2	3	4	5	
Male	School	6.3	10.4	31.3	35.4	16.7	0.0	10.6	31.9	34.0	23.4
	District	6.3	10.4	31.3	35.4	16.7	0.0	10.6	31.9	34.0	23.4
	State	14.8	24.9	31.8	25.9	2.6	14.3	30.1	29.0	23.2	3.4
Female	School	2.0	15.7	33.3	37.3	11.8	2.0	13.7	41.2	37.3	5.9
	District	2.0	15.7	33.3	37.3	11.8	2.0	13.7	41.2	37.3	5.9
	State	7.8	18.2	31.4	36.8	5.8	11.0	29.2	32.0	24.8	2.9

**Grade 6 - Racial/Ethnic Background**

Levels	ELA					Mathematics					
	1	2	3	4	5	1	2	3	4	5	
White	School	3.2	9.7	33.9	38.7	14.5	0.0	11.5	37.7	42.6	8.2
	District	3.2	9.7	33.9	38.7	14.5	0.0	11.5	37.7	42.6	8.2
	State	6.4	16.6	32.2	39.2	5.5	7.4	23.5	33.5	31.7	4.0
Black	School										
	District										
	State	23.0	31.9	28.9	15.3	1.0	25.6	41.1	24.3	8.7	0.4
Hispanic	School	10.0	30.0	30.0	30.0	0.0	0.0	10.0	70.0	20.0	0.0
	District	10.0	30.0	30.0	30.0	0.0	0.0	10.0	70.0	20.0	0.0
	State	15.0	27.2	34.2	22.2	1.4	16.3	37.6	30.3	15.0	0.7
Asian	School	0.0	0.0	31.3	37.5	31.3	0.0	6.3	18.8	25.0	50.0
	District	0.0	0.0	31.3	37.5	31.3	0.0	6.3	18.8	25.0	50.0
	State	3.4	8.4	21.5	51.5	15.3	3.1	10.7	22.6	45.8	17.8
Native Hawaiian/Pacific Islander	School										
	District										
	State	5.5	15.1	37.0	37.0	5.5	8.8	25.2	28.6	34.0	3.4
American Indian	School										
	District										
	State	12.3	20.9	35.2	28.2	3.4	13.5	33.6	31.5	19.1	2.3
Two or More Races	School										
	District										
	State	9.7	20.4	30.4	33.7	5.9	12.0	29.2	28.8	25.4	4.6

**Grade 6 - Students with Disabilities**

Levels	ELA					Mathematics					
	1	2	3	4	5	1	2	3	4	5	
IEP	School	30.0	40.0	30.0	0.0	0.0					
	District	30.0	40.0	30.0	0.0	0.0					
	State	43.1	33.5	17.1	5.8	0.5	39.6	40.3	14.7	5.1	0.4
Non-IEP	School	1.1	10.1	32.6	40.4	15.7	0.0	12.4	32.6	39.3	15.7
	District	1.1	10.1	32.6	40.4	15.7	0.0	12.4	32.6	39.3	15.7
	State	6.7	19.9	33.8	35.0	4.7	8.7	28.1	32.8	26.8	3.6

**Grade 6 - Economically Disadvantaged**

Levels	ELA					Mathematics					
	1	2	3	4	5	1	2	3	4	5	
Free/Reduced Price Lunch	School	15.8	26.3	26.3	31.6	0.0	5.3	15.8	57.9	21.1	0.0
	District	15.8	26.3	26.3	31.6	0.0	5.3	15.8	57.9	21.1	0.0
	State	17.4	28.7	32.7	20.0	1.3	19.1	38.5	28.6	13.2	0.7
Not Eligible	School	1.3	10.0	33.8	37.5	17.5	0.0	11.4	31.6	39.2	17.7
	District	1.3	10.0	33.8	37.5	17.5	0.0	11.4	31.6	39.2	17.7
	State	4.3	13.3	30.3	44.6	7.6	5.1	19.2	32.7	36.8	6.2

**Grade 7****Grade 7 - All**

Levels	ELA					Mathematics				
	1	2	3	4	5	1	2	3	4	5
School	5.1	11.2	26.5	38.8	18.4	0.0	16.3	29.6	42.9	11.2
District	5.1	11.2	26.5	38.8	18.4	0.0	16.3	29.6	42.9	11.2
State	14.3	19.0	26.9	30.5	9.4	9.8	28.4	34.3	24.6	2.9

**Grade 7 - Gender**

Levels	ELA					Mathematics					
	1	2	3	4	5	1	2	3	4	5	
Male	School	10.0	6.0	26.0	42.0	16.0	0.0	16.0	22.0	48.0	14.0
	District	10.0	6.0	26.0	42.0	16.0	0.0	16.0	22.0	48.0	14.0
	State	18.8	21.7	27.2	26.1	6.2	11.5	28.7	32.6	24.0	3.3
Female	School	0.0	16.7	27.1	35.4	20.8	0.0	16.7	37.5	37.5	8.3
	District	0.0	16.7	27.1	35.4	20.8	0.0	16.7	37.5	37.5	8.3
	State	9.5	16.2	26.5	35.0	12.8	8.1	28.1	36.0	25.3	2.5

**Grade 7 - Racial/Ethnic Background**

Levels	ELA					Mathematics					
	1	2	3	4	5	1	2	3	4	5	
White	School	3.2	12.9	29.0	33.9	21.0	0.0	12.9	35.5	46.8	4.8
	District	3.2	12.9	29.0	33.9	21.0	0.0	12.9	35.5	46.8	4.8
	State	8.9	15.1	26.6	37.0	12.4	6.1	22.1	36.3	31.9	3.5
Black	School										
	District										
	State	27.3	27.6	26.1	17.0	2.1	19.6	41.9	28.8	9.5	0.2
Hispanic	School										
	District										
	State	18.4	23.6	29.7	24.1	4.2	12.2	35.5	35.5	16.1	0.7
Asian	School	5.6	0.0	22.2	61.1	11.1	0.0	16.7	5.6	44.4	33.3
	District	5.6	0.0	22.2	61.1	11.1	0.0	16.7	5.6	44.4	33.3
	State	4.7	7.3	17.8	41.4	28.8	2.9	10.7	25.2	44.5	16.7
Native Hawaiian/Pacific Islander	School										
	District										
	State	7.9	15.1	22.2	42.9	11.9	3.9	20.3	37.5	32.8	5.5
American Indian	School										
	District										
	State	15.9	20.5	31.1	27.2	5.3	9.7	32.5	39.0	17.3	1.4
Two or More Races	School	9.1	9.1	9.1	45.5	27.3	0.0	27.3	9.1	45.5	18.2
	District	9.1	9.1	9.1	45.5	27.3	0.0	27.3	9.1	45.5	18.2
	State	12.9	17.8	25.5	31.1	12.7	9.6	27.2	32.6	25.8	4.8

**Grade 7 - Economically Disadvantaged**

Levels	ELA					Mathematics					
	1	2	3	4	5	1	2	3	4	5	
Free/Reduced Price Lunch	School	0.0	46.2	30.8	23.1	0.0	0.0	53.8	30.8	15.4	0.0
	District	0.0	46.2	30.8	23.1	0.0	0.0	53.8	30.8	15.4	0.0
	State	21.2	25.1	28.5	21.7	3.5	14.7	37.3	33.4	14.0	0.6
Not Eligible	School	5.9	5.9	25.9	41.2	21.2	0.0	10.6	29.4	47.1	12.9
	District	5.9	5.9	25.9	41.2	21.2	0.0	10.6	29.4	47.1	12.9
	State	6.5	12.3	25.1	40.2	16.0	4.4	18.4	35.3	36.5	5.5

**Grade 8****Grade 8 - All**

Levels	ELA					Mathematics				
	1	2	3	4	5	1	2	3	4	5
School	1.2	5.8	22.1	55.8	15.1	2.3	18.6	30.2	38.4	10.5
District	1.2	5.8	22.1	55.8	15.1	2.3	18.6	30.2	38.4	10.5
State	14.0	18.9	26.7	34.1	6.3	19.7	23.8	24.4	28.2	3.9

**Grade 8 - Gender**

Levels	ELA					Mathematics					
	1	2	3	4	5	1	2	3	4	5	
Male	School	2.6	10.5	23.7	52.6	10.5	2.6	18.4	26.3	36.8	15.8
	District	2.6	10.5	23.7	52.6	10.5	2.6	18.4	26.3	36.8	15.8
	State	18.6	21.9	27.2	28.4	3.9	22.5	24.0	23.0	26.4	4.2
Female	School	0.0	2.1	20.8	58.3	18.8	2.1	18.8	33.3	39.6	6.3
	District	0.0	2.1	20.8	58.3	18.8	2.1	18.8	33.3	39.6	6.3
	State	9.1	15.9	26.1	40.1	8.8	16.7	23.7	25.9	30.2	3.6

**Grade 8 - Racial/Ethnic Background**

Levels	ELA					Mathematics					
	1	2	3	4	5	1	2	3	4	5	
White	School	1.7	3.4	24.1	56.9	13.8	0.0	21.1	29.8	40.4	8.8
	District	1.7	3.4	24.1	56.9	13.8	0.0	21.1	29.8	40.4	8.8
	State	8.8	15.2	26.3	41.4	8.3	12.9	20.1	26.4	35.9	4.7
Black	School										
	District										
	State	26.9	27.3	26.6	17.9	1.2	37.7	30.6	20.0	11.3	0.4
Hispanic	School										
	District										
	State	17.6	23.3	29.3	27.3	2.5	24.1	29.2	24.9	20.6	1.2
Asian	School										
	District										
	State	4.6	7.6	17.5	48.5	21.8	5.4	10.8	17.2	46.0	20.5
Native Hawaiian/Pacific Islander	School										
	District										
	State	12.1	14.3	22.9	37.1	13.6	18.9	17.5	24.5	28.7	10.5
American Indian	School										
	District										
	State	15.2	25.5	29.3	26.3	3.8	21.0	31.1	25.8	20.7	1.5
Two or More Races	School										
	District										
	State	12.9	17.2	25.6	35.4	9.0	18.5	24.0	22.5	29.9	5.1

**Grade 8 - Economically Disadvantaged**

Levels	ELA					Mathematics					
	1	2	3	4	5	1	2	3	4	5	
Free/Reduced Price Lunch	School	0.0	20.0	50.0	30.0	0.0	0.0	40.0	40.0	20.0	0.0
	District	0.0	20.0	50.0	30.0	0.0	0.0	40.0	40.0	20.0	0.0
	State	20.9	24.8	28.2	23.9	2.1	28.6	29.6	23.4	17.5	1.0
Not Eligible	School	1.3	3.9	18.4	59.2	17.1	2.6	15.8	28.9	40.8	11.8
	District	1.3	3.9	18.4	59.2	17.1	2.6	15.8	28.9	40.8	11.8
	State	6.4	12.5	24.9	45.3	10.9	9.9	17.5	25.5	40.0	7.0